

Reproductions of Model Gowns

exhibited by

Haas Brothers

for the

Spring Season of 1913

*The Exclusive Fabrics used in these Gowns, in all the Newest Colors,
are to be found in the*

Haas Brothers' Blue Book of Samples



Paris

13 Rue des Pyramides

New York

303-305 Fifth Avenue

71355
112



11536-51

Dreccoll Model of Black Lace



Haas Brothers.

Paris - New York.

Model No. 133. White Worth satin, No. 16938, veiled with white Callot chiffon and covered with black Chantilly lace and two flounces. Shoulder and panel of net lace with gold kimono sleeve of lace to match. Skirt, belt and sash. Bottom of skirt of black Worth satin.

Drecolt Lace Theatre Gown



Haas Brothers.

Paris - New York.

Model No. 126. Black crepe Georgette, and tan Callot chiffon underskirt with cream net top lace flounce. Black satin belt, No. 16939, and sash with long ends. Lace forms collar and reverses. Black and white in soft folds trims sleeves.

Drecoll Model of Black Lace



Haas Brothers.

Paris - New York.

Model No. 125. Black Worth Satin, No. 16939. Tunic of black net with two deep flounces of Chantilly lace forms drapery. Deep folds of satin edges tunic with rosette bows of satin ribbon. Corsage of black satin with shoulder and sleeve of black net. Black satin belt.

Evening Dress of White Worth Satin



Kuas Brothers.

Paris - New York.

Model No. 101. White Worth Satin No. 16938. Waist and Tunic of crystal beaded net, studded with rhinestones. Satin panel front with three rhinestone ornaments. Net sleeves.

Martial & Armand Lace Evening Gown



Haas Brothers.

Paris - New York.

Model No. 102, of Black maline. Lace flouncing. Tunic of flesh-colored chiffon covered with white renaissance lace. Belt and sash of shell pink satin, 16926. Rhinestone buttons trim front of dress. Pink chiffon waist with same lace as underskirt forms sleeves and bodice with a shawl drapery, collar of renaissance lace.

Model of Black Worth Satin



Haas Brothers.

Paris - New York.

Model No. 115. Black Worth Satin, No. 16939, and draped skirt. Black Callot chiffon waist over shell pink satin overlaid with cream net top lace. Band of black satin and lace on sleeves overlaid with chiffon. Ornaments of Bulgarian colors on belt. Fancy buttons. Black satin sash with heavy ornament of braid and fringe.

Drecol Model of Cote de Cheval



Haas Brothers.

Paris - New York.

Model No. 134. White Cote de Cheval, No. 6253. Geranium red embroidered girdle, lace ruffle on coat and tie, also trims sleeves. Pleated net vest with buttons.

Premet Model of Brocaded Crepe Trianon



Haas Brothers.

Paris - New York.

Model No. 111. French blue Matelasse, 6750, and brown chiffon. The Normandy combination. Embroidered ornament back of skirt, also outlines waist in soft folds in vest.

Brandt Model of Brocaded Crepe Trianon



Haas Brothers.

Paris - New York.

Model No. 118, of sand color Brocaded Crepe Trianon, No. 16828, heavily embroidered in black. Collar and belt and skirt of black Worth satin with panel of moire silk and silk tassel. Jet buckle. Waist of white net covered with cream lace. Girdle and straps of black satin. Blue stone buttons studded with rhinestones, and fold of blue satin.

Model of Black Worth Satin



Haas Brothers.

Paris - New York.

Model No. 103. Black Worth Satin, 16939. Draped skirt caught up with a fancy silver lace. Myrtle green chiffon trims waist over white silk and points of silver lace. Shoulder caps, elbow and neck trimmed with same. Sou-tache trimmed shoulder and arm down front and ornaments of waist. Fancy ornament in back of waist.

Brandt Model of Moire Crepe Sylviane



Haas Brothers.

Paris - New York.

Model No. 116. Sevre blue moire Crepe Sylvaine, 16948. Draped skirt Side panel of silk embroidery in three shades of blue and ornament at belt. Belt of silk to match material. Skirt lining to match. Chiffon waist, a round collar and square jabot of maline lace edged with black net. Black buttons. Wide fold of material and maline lace trims sleeves.

Premet Model of Crepe Chinois



Haas Brothers.

Paris-New York.

Model No. 107, of putty color Crepe Chinois, 16878. Skirt draped, sash of material and Brique moire, ornaments trim belt, sash and collar and vest effect. Sleeves lined with Brique red. Ruffle of pleated mulle trims waist, front and sleeves.

Beer Model of Crepe Chinois



Haas Brothers.

Paris-New York.

Model No. 136, of Lemon Color Crepe Chinois, No. 6776. Underskirt and sash of black Worth satin. Tunic and waist embroidered in Chinese design. Silver edged with a fold of black satin. White net lace and black net trims sleeves and yoke.

Drecoll Model of Crepe Chinois



Haas Brothers.

Paris-New York.

Model No. 127. Sand color Crepe Chinois draped skirt and Tunic with shadow embroidery in green with wide accordion pleating edging Tunic. Sage green silk, belt and bow. Embroidery on waist to match tunic. Net top lace forms bib.



Georgette Model of Crepe Chinois



Haas Brothers.

Paris - New York.

Model No. 105. Cafe au Lait Crepe Chinois, No. 16810. Gracefully draped skirt with tassel to match heavily embroidered waist on chiffon with white embroidered undersleeves and collar. Ornament at waist, and back of brown, blue and silver embroidery.



Paquin Model of Moire Serb



Kuass Brothers.

Paris - New York.

Model No. 138. Navy Blue Moire Serb, No. 16678. Draped skirt with tunic. Blue satin sash. White Callot chiffon covers waist of white satin, No. 16938. Tab of blue satin trimmed with Venice lace. White satin belt, No. 16928. Coat trimmed with piping of material in scroll design on sleeves and down front. Cord and tassel.



Drecol Model of Crepe Chinois



Haas Brothers.

Paris - New York.

Model No. 130. Geranium Color Crepe Chinois. Plain skirt, navy blue taffeta and belt and sash. Buttonholes stitched with blue silk. White embroidered crepe waist in red and green. Embroidered ornament in red in front of waist.



Cheruit Model of Printed Crepe Chinois



Haas Brothers.

Paris - New York.

Model No. 155. Black and White Printed Crepe Chinois. Skirt draped. White brocaded silk sash and belt and white silk tassels. Deep collar of Bohemia lace edged with chiffon cloth. Cuffs trimmed with three rows of narrow val.



Drecol Model of Moire Crepe Gilda



Huas Brothers.

Paris - New York.

Model No. 129. French Blue Moire Crepe Gilda, No. 16666. Gracefully draped skirt. Girdle and belt of black satin. Bulgarian embroidery on sash end. White net vest with pleated ruffle.



Premet Model of Moire Crepe Gilda



Huas Brothers.

Paris - New York.

Model No. 108. Cafe au Lait color, Moire Crepe Gilda, 16945. Gracefully draped skirt and tunic embroidered in dark green. Girdle, collar of dark green silk, front and back of waist embroidered as skirt. Cream cup net lace forms yoke and vest effect.



Cheruit Model of Crepe Chinois



Haas Brothers.

Paris - New York.

Model No. 153, of Lime Color Crepe Chinois, No. 16870. Draped skirt. Tunic heavily embroidered and front of waist over shoulder and down back of tunic. Deep fold of chiffon to match material in circular style around the neck and waist. Yoke collar of flesh color chiffon. Deep yoke of chiffon to match materials on cuffs.

Brandt Model of Crepe Chinois



Haus Brothers.

Paris - New York.

Model No. 117. Navy Crepe Chinois, 16823. Silk drop buttons embroidered in light blue trim waist and skirt. Silk button holes. Collar and vest of light blue embroidered batiste. White net for chemisette with cord and tassel. Net undersleeves. Black sash and belt.

Worth Model of Crepe Chinois



Haas Brothers.

Paris - New York.

Model No. 135, of Black Crepe Chinois, No. 6975. Embroidered ornaments trim waist and tunic. White net undersleeves and maline lace cuffs. Silk buttons trim sleeves. Vest front of pat green chiffon embroidered in shades of red and green over net lace. Ruffle of net around neck.

Premet Model of Faille de Laine



Haas Brothers.

Paris - New York.

Model No. 109, of navy blue Faille de Laine. Draped skirt with a wide fold of Worth Satin, 16939. Waist of black satin with cloth straps over shoulder. Cuffs and ornament of Bulgarian embroidery. Vest of white net and pleated ruffle. Collar of Cape de Cura lace.



Paquin Model of Moire Crepe Gilda



Haus Brothers.

Paris-New York.

Model No. 139. Moire Crepe Gilda, No. 16950, and shell pink satin, No. 16926, trims underskirt and point on waist. Black bone buttons studded with rhinestones down centre of skirt. Belt of moire. Shell pink chiffon over white satin. Black chiffon drapes back and shoulder with a fold on sleeves of cuff. Collar of shell pink satin.

Cheruit Model of Needle Cord



Haas Brothers.

Paris - New York.

Model No. 151, of Navy Needle Cord, No. 1558. Shadow embroidered in red on left side of skirt, the same in straps over shoulder. White pique for cuffs and small round collar. Buttons to match material. Sash and belt and striped taffeta in tan, red and black.



Premet Model of Needle Cord



Haas Brothers.

Paris - New York.

Model No. 113. One-piece dress of navy Needle Cord Cloth embroidered in black soutache and black buttons. Plain cloth belt and gold buckle and eyelets. Collar and sash of Roman colored silk. Beaded fringe to match sash and yoke of pleated net.



Premet Model of Crepe Chinois



Haas Brothers.

Paris-New York.

Model No. 106. Plaid silk deep girdle and sash. Black Crepe Chinois skirt. White chiffon waist embroidered with tiny drop button of old rose beads and gold thread. Pleated maline lace trims waist and cuffs.



Cheruit Model of Crepe Chinois



Haas Brothers.

Paris - New York.

Model No. 152. Tilleul Color Crepe Chinois, No. 16870. Draped skirt with a fold of black and white checked silk and the open loop of the drapery also for belt. Vest and collar of fine embroidered batiste.



Dreccoll Model of Faille de Paris



Haas Brothers.

Paris - New York.

Model No. 128, of Ivory Faille de Paris, draped skirt, navy crepe fold outlines Tunic. Two tabs of Chinese embroidery in blue and white. Belt of material and white silk fringe blue net edges collar.



Beer Model of Cote de Cheval



Haas Brothers.

Paris - New York.

Model No. 137. Cote de Cheval, No. 6998. White silk serge trims revers and black satin edged with white trims cuffs and collar. Buttons covered with material. Bouquet of Bulgarian colors.

Rondeau Model of Peau de Gant



Haas Brothers.

Paris-New York.

Model No. 114, of Beige color Peau de Gant, No. 1773, combined with brown and white novelty check, No. 1747, which trims underskirt and coat. Collar laced sailor knot fashion of white broadcloth edged with self-color material. Coat lined with satin to match. Novelty buttons to match.



Bernard Model of Cote de Cheval



Haas Brothers.

Paris-New York.

Model No. 124, of ecru novelty Cote de Cheval cloth. Batiste collar edged with fine cluny lace. Coat fastened with belt and buckle. Buttons to match material.



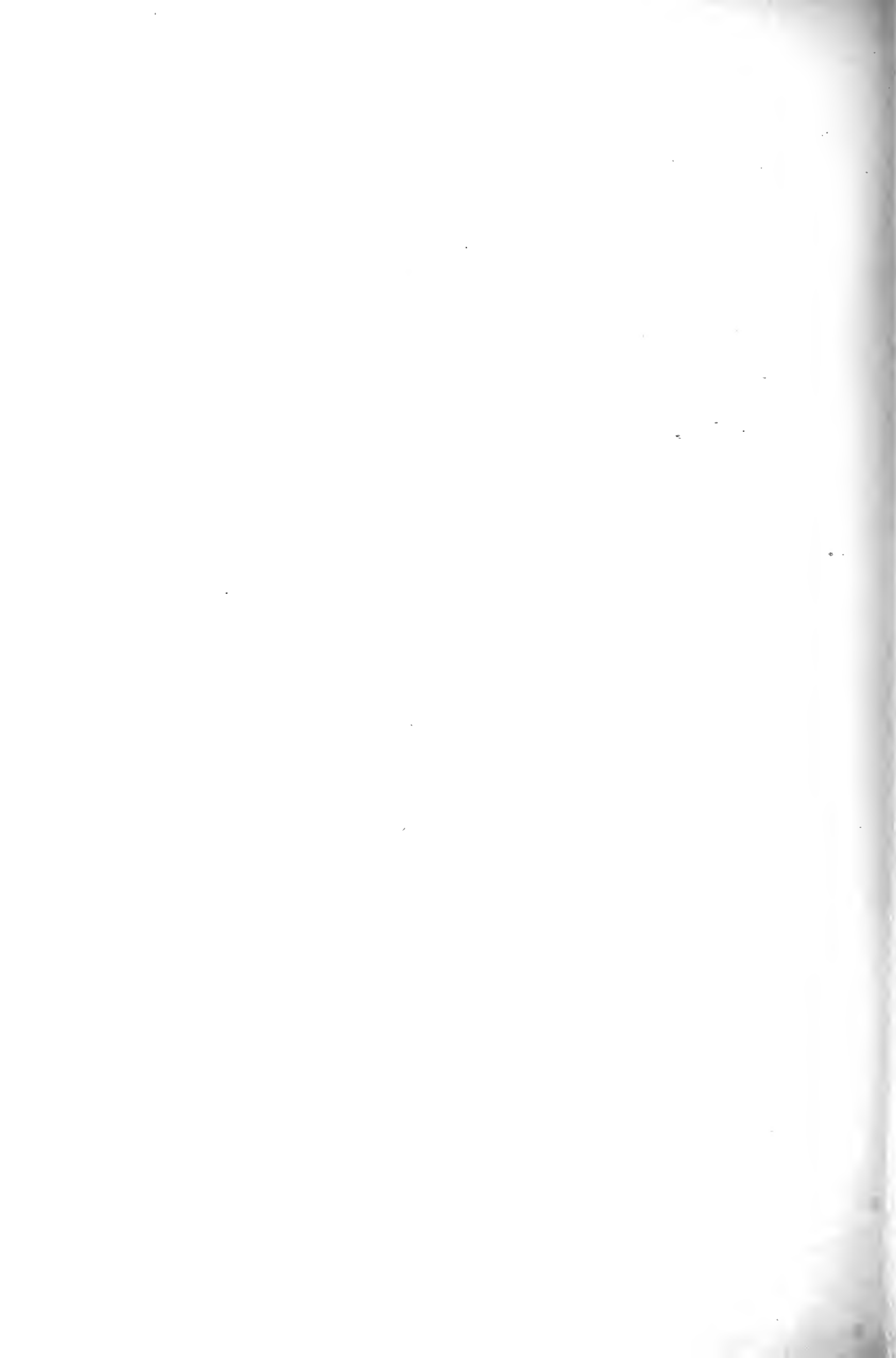
Drecoll Model of Checked Suiting



Haas Brothers.

Paris - New York.

Model No. 131, of Black and White Gun Club Check. Coat and skirt trimmed with white pearl buttons. Cherry red taffeta sash with fringe to match. Coat lined with cherry red. Collar and undervest, and cuffs of white crepe.



Bernard Model of Tissu Etoile



Haas Brothers.

Paris - New York.

Model No. 122. Model of Shepard check, No. 1745. Coat outlined with white cloth. White and black Novelty buttons. Vest of Paprika Crepe Chinois. Black Columbine buttons. Black satin collar and cuffs with white soutache braid and edged with batiste embroidery.



Dreccoll Model of Needle Cord



Haas Brothers.

Paris - New York.

Model No. 132, of Navy Needle Cord cloth. Skirt draped. Coat trimmed with fine silk, braid piped with King's blue silk. Vest and collar of white faille. Buttons covered with material.



Cheruit Model of Peau de Gant



Haas Brothers.

Paris-New York.

Model No. 157. Tailor gown, tan Cheruit Suiting. Draped skirt. Drop link bone buttons to match material.

Bernard Model of Cloth Matelasse



Haas Brothers.

Paris - New York.

Model No. 120, of Brique color Cloth Matelasse, No. 2003. Draped skirt. Pearl buttons to match material. Lemon corduroy over collar and vest effect, lined with ribbed satin.

Cheruit Model of Crepe de Laine



Haas Brothers.

Paris - New York.

Model No. 156, of Reseda Crepe de Laine. Draped skirt with a deep girdle. Coat faced with white pique and collar lined with white pique.

Callot Model of Covert Suiting



Haas Brothers.

Paris - New York.

No. 149. Tailored Suit of Tan Covert Suiting. Draped skirt and lining with Satin to match. Collar of navy blue Crepe.

Paquin Model of Crepe Chinois



Huas Brothers.

Paris - New York.

Model No. 140. Paris Rose Crepe Chinois, No. 16869. Draped skirt and chiffon to match tunic with braided ornaments to match on front and back of skirt. Coat trimmed with same braid. Soutache and cord and Chinese embroidery on tan linen forms vest effect. Strap of cloth belt and horseshoe buckle of gold. Collar of brown chamois cloth and ornament to match. Chiffon waist to match material over flesh color. Collar and revers of same.



Bernard Model of Moire Serb



Haas Brothers.

Paris - New York.

Model No. 123, of Gendarme blue Moire Serb. Gracefully draped skirt. White bone buttons and button-holes trim coat and sleeve. White satin trims collar, vest and cuffs.



Bernard Model of Faille de Laine



Haas Brothers.

Paris - New York.

Model No. 121, of navy blue Faille de Laine, No. 1909. Draped skirt Pannier effect. Gold ball buttons trim sleeves and front of coat. Vest of chamois cloth with red silk button holes and buttons. White silk girdle embroidered in red and French blue.

Premet Model of Needle Cord



Haas Brothers.

Paris - New York.

Model No. 112. Cafe au Lait. Needle Cord No. 1560. Draped skirt with fine soutache of embroidery on side of skirt. Buttons trim coat and French blue moire silk trims collar and side pocket. Coat and skirt lined with satin to match. Blouse of white chiffon cloth over tucked net. French blue moire silk in strap effect over shoulders. Front of waist and sleeves embroidered in gold and green stones. Collar of Bohemia lace.

Callot Model of Brown Shepard-Check

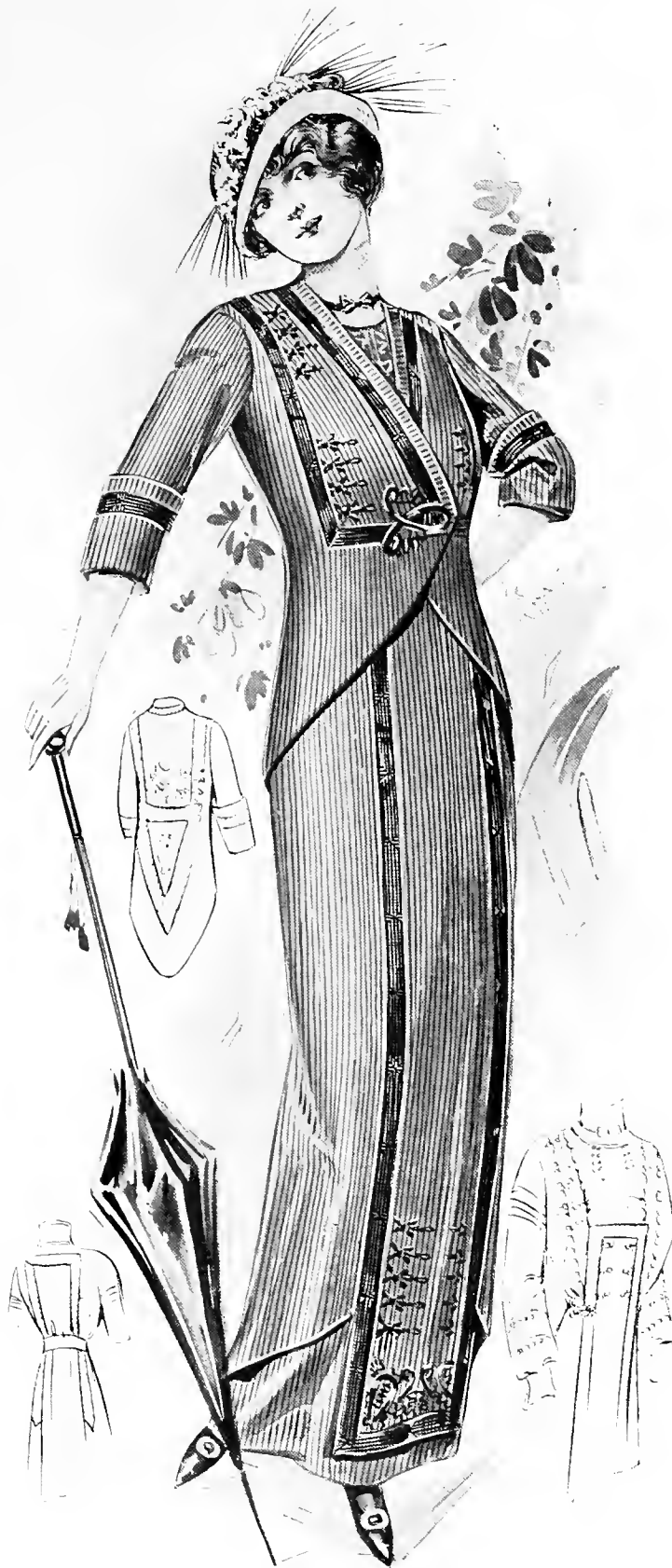


Haas Brothers.

Paris - New York.

No. 147. Tailored Suit of Brown Shepard Check. Draped skirt. Brown
Satin lining. Coat lined with same. Small buttons of brown bone trim skirt
and sleeves. Larger size for front of skirt.

Georgette Model of Cote de Cheval



Haas Brothers.

Paris - New York.

Model No. 104. Ravenswing Blue Silk Cote de Cheval. Heavily-embroidered panel in front. Black satin girdle. Chiffon waist to match over gold lace and neck trimmed with same. Coat faced with gold lace and outside of coat heavily embroidered with soutache braid and small buttons.

Callot Model of Black Lace



Haas Brothers.

Paris - New York.

No. 145. Dinner Gown of Black Satin, No. 16939. Sash ends at foot of skirt. Overskirt of black net and two flounces of black Point d'Sprit lace. Waist of same lace as skirt over white lace, which forms shoulder and sleeves. Orange velvet ribbon outlines yoke and a handsome large flower.

Callot Model of White Lace



Haas Brothers.

Paris - New York.

No. 144. Evening Dress of Lace over White Satin, No. 16938. Overskirt of white net edged with old rose satin. White Satin buttons down front of skirt. Tunic of white Point d'Sprit Chantilly flouncing. White taffeta belt. Waist of lace to match skirt covered with white net. Collar and front of old rose satin fold. Double deep-pleated collar of net and pink roses.

Callot Dress of Chinese Crepe

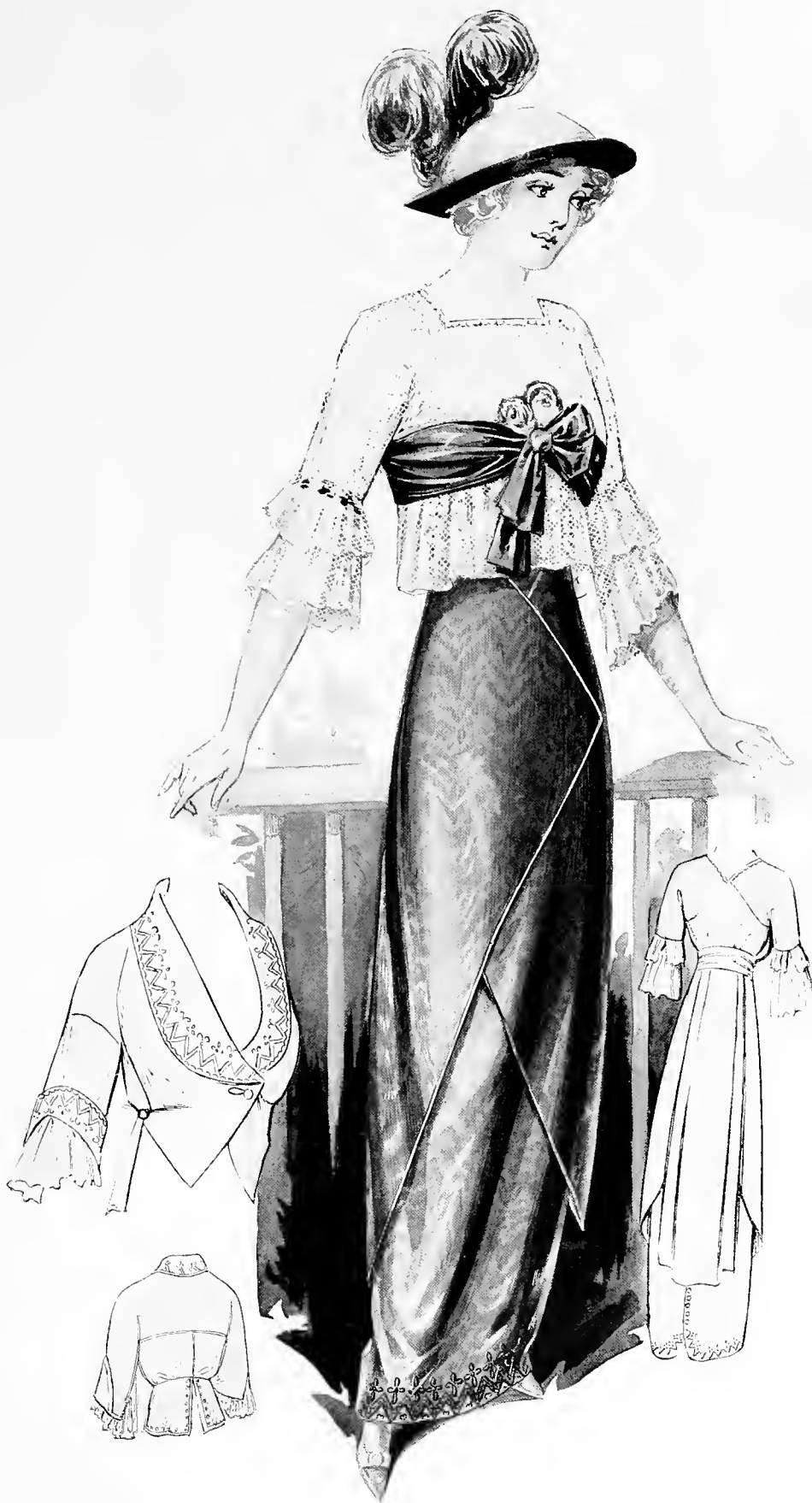


Haas Brothers.

Paris - New York.

No. 154. Afternoon Dress of Chinese Crepe, No. 7589. Draped skirt. Lining of flesh color silk. Waist of grey chiffon over flesh color silk. Front of corsage and skirt embroidered in grey. Shawl collar of same embroidery on chiffon. Sash of grey chiffon embroidery on ends.

Callot Model of Moire Crepe Gilda



Haas Brothers.

Paris - New York.

No. 148. Theatre Gown of Besnard Color Moire Crepe Gilda No. 16946. Skirt draped. Buttons to match material. Beads and silk embroidery at foot of skirt. Deep girdle of material. Waist of ecru shadow lace. Sleeves trimmed with two deep ruffles of same lace. Wide ribbon to match material with a loop and two ends and bouquet. Narrow gold lace at neck. Coat embroidered as bottom of skirt. Buttons to match.

Callot Model of Taffeta and Silk Voile



Haas Brothers.

Paris - New York.

No. 143. Afternoon Dress. Underskirt with fold of purple taffeta, also belt to match. Overskirt of silk voile, black panel and side sash of taffeta. Voile over white lace for waist. Taffeta back and front of waist, edged with embroidery to match. Buckle and buttons to match taffeta, edged with gold embroidery down front of skirt.

Callot Model of Chiffon and Taffeta



Haas Brothers.

Paris - New York.

No. 150. Afternoon Dress of White Satin, No. 16938. Clouded with blue Callot chiffon. Overskirt draped to match chiffon. Old blue taffeta coat with belt and sash. Tassels of silk and beads to match taffeta. Garniture of same and long tassels. White tulle and soft folds of net.



Callot Model of Black Satin and Lace



Haas Brothers.

Paris - New York.

No. 142. Evening Dress, Black Satin, No. 16939. Draped skirt, sash draped around hips and waist with end in front held with handsome green buckle, green stones and tipped with gold. Black chiffon with black lace at feet. Gold and black lace for shoulder and waist with a deep shawl drape of black lace flouncing edged with a band of gold lace, also forms sleeves,

Callot Model of Crepe Chinois



Haas Brothers.

Paris - New York.

No. 141. Afternoon Gown, Callot Blue Crepe Chinois, No. 16816. Satin underskirt to match with a deep fold of material draped over skirt held up with black silk tassels. Vest and undercuffs of cream net top lace. Black Satin belt and bow and white buckle. White Satin, No. 16938. Vest and front of skirt with buttons and buttonholes. White crochet buttons dotted to match material.

Callot Model of Black Net and White Lace

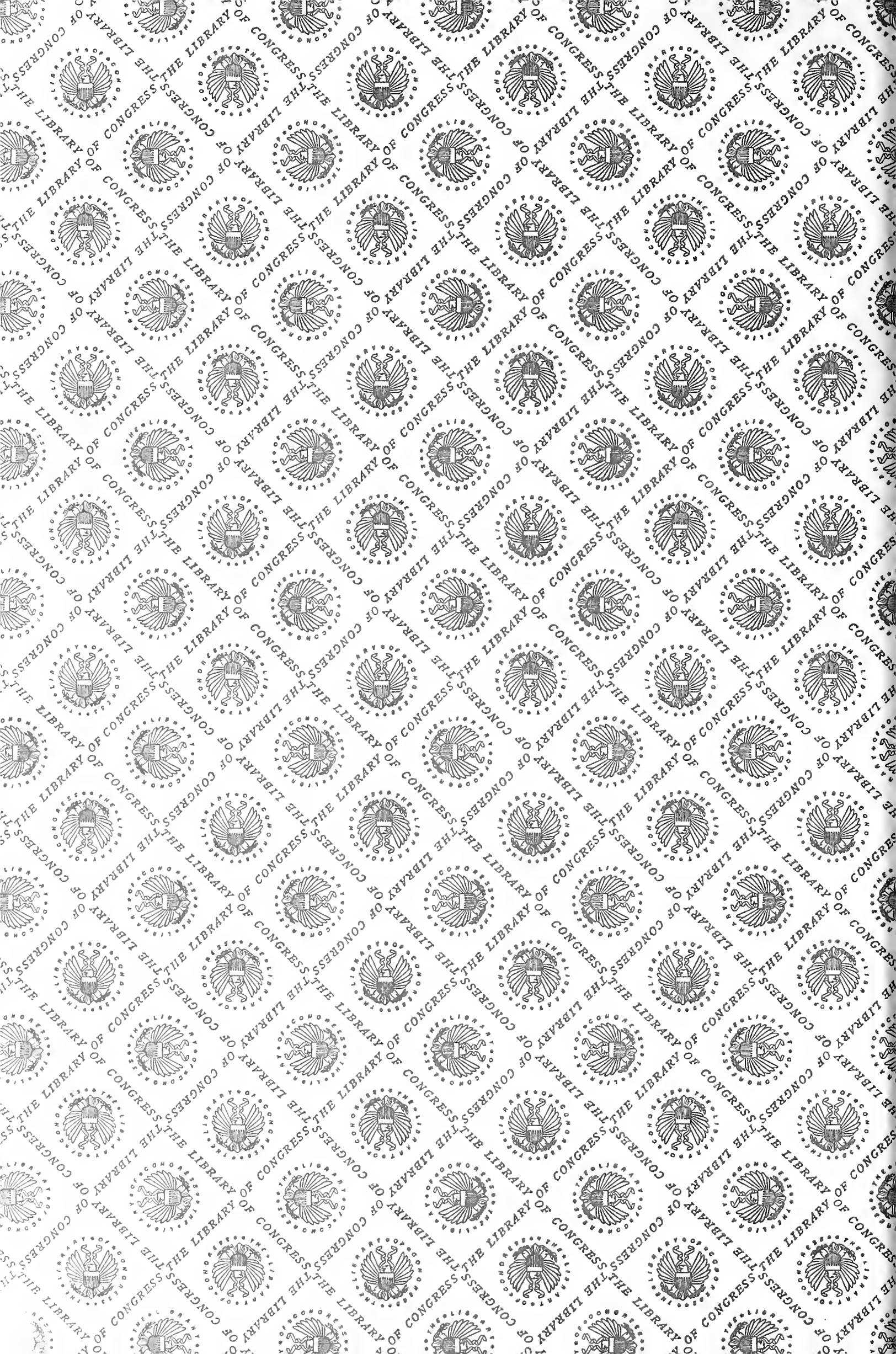


Haas Brothers.

Paris - New York.

No. 146. Evening Gown of Lace over White Satin, No. 16958. Dress lined with white chiffon half way. Overskirt of black net draped softly. White shadow lace flouncing. Black velvet belt and ends. Corsage of White Satin covered with black net and lace to match skirt. White pearl and silver trimming edges waist and ends with two heavy tassels of pearls, silver and bugle.

459 - 90



LIBRARY OF CONGRESS



0 014 062 032 4